

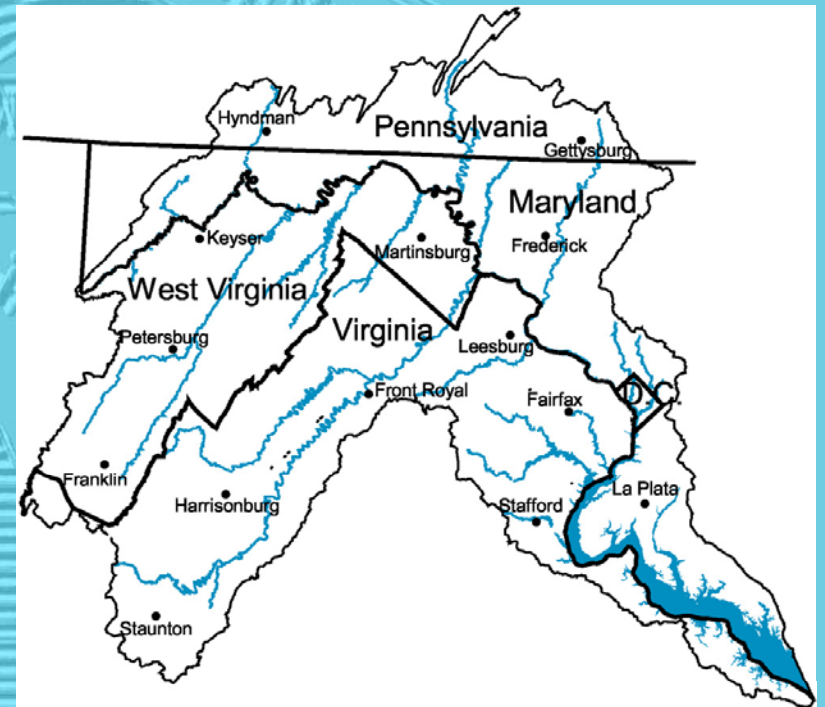
INTERSTATE COMMISSION ON
THE POTOMAC RIVER BASIN
PRESENTATION

AT

*PLENARY SESSION OF THE
MID- ATLANTIC WATER
RESOURCES RESEARCH
INSTITUTES*

INTERSTATE COMMISSION ON THE POTOMAC RIVER BASIN

- * Created 1940
- * Agency of Members
- * 5 Jurisdictions + U.S.
- * 18 Commissioners + 18 Alternates
- * 20 +/- Technical Staff
- * Non-regulatory
- * River as boundary



MISSION: Enhance, protect and conserve the water and associated land resources of the Potomac River basin and its tributaries through regional and interstate cooperation.

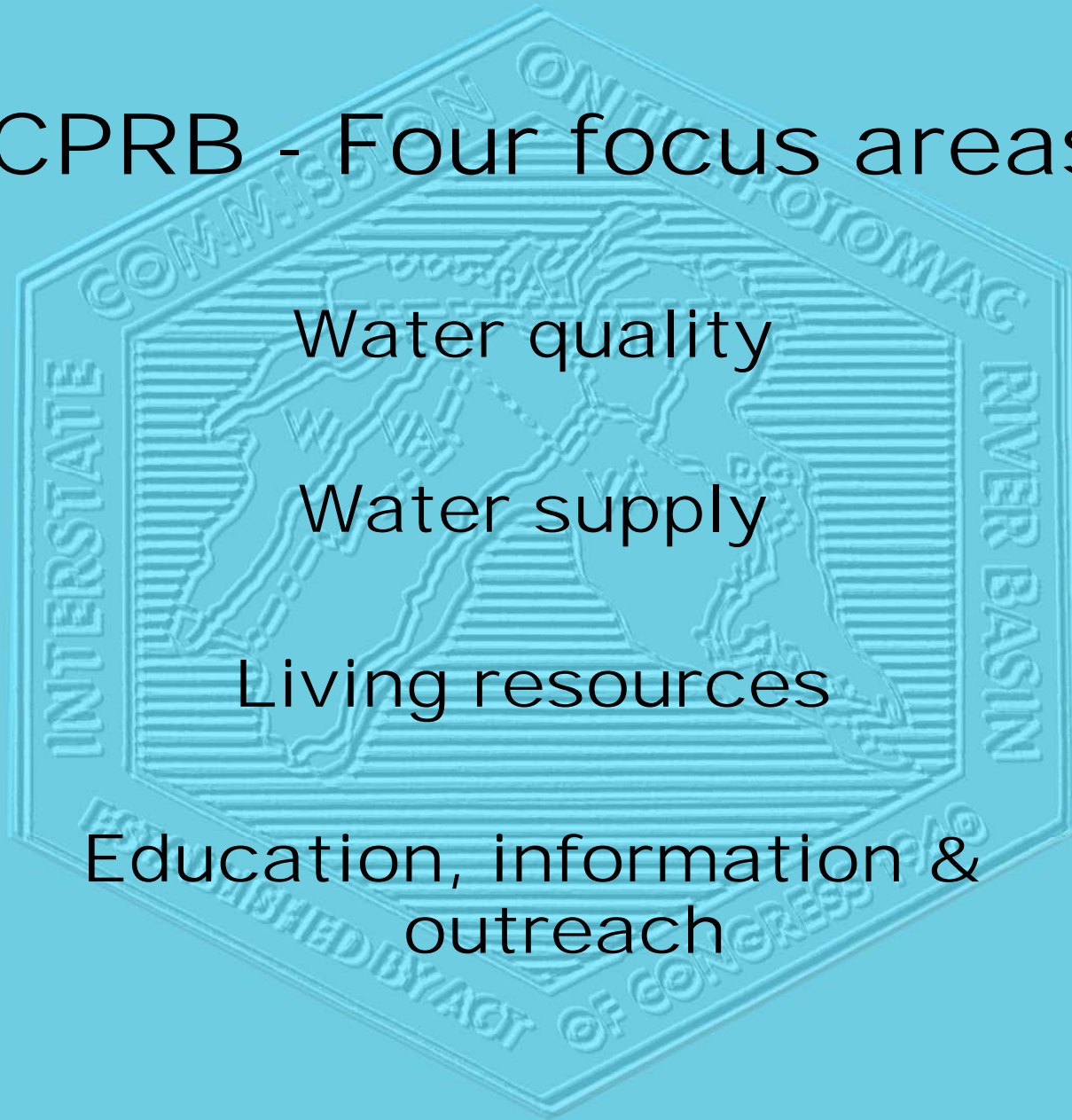
ICPRB - Four focus areas

Water quality

Water supply

Living resources

Education, information &
outreach



CO-OP SECTION

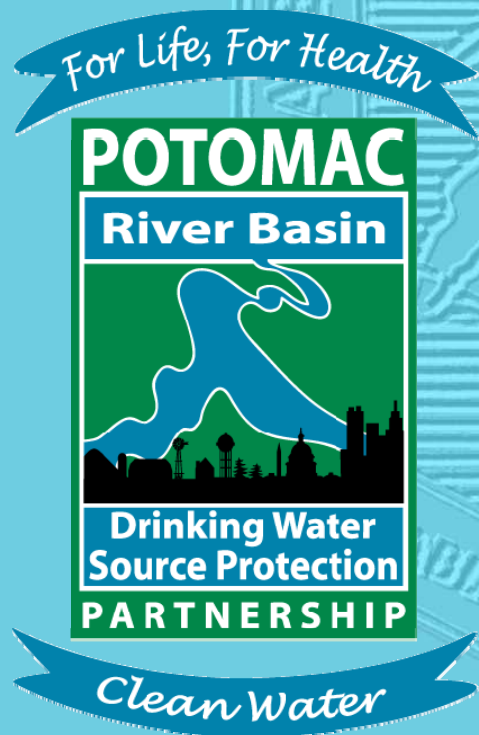
Section for Cooperative Operations on the Potomac River

- Special Section Authorized in Compact
- Created 1979
- Governed by LFAA & WSCA
- Three Utilities – “Operations Committee”
- Manage Metro Supply During Drought
 - Five Year Demand Studies
 - Annual Drought Exercise
 - Technical Support/Advise/Assistance

POTOMAC BASIN ENERGY ISSUES

- Energy influence through history
- Small dams/C&O Canal
- Power plants (Consumptive loss)
- Hydroelectric power
- Wind generation
- Marcellus shale gas
- Biofuels production

Potomac Drinking Source Water Protection Partnership



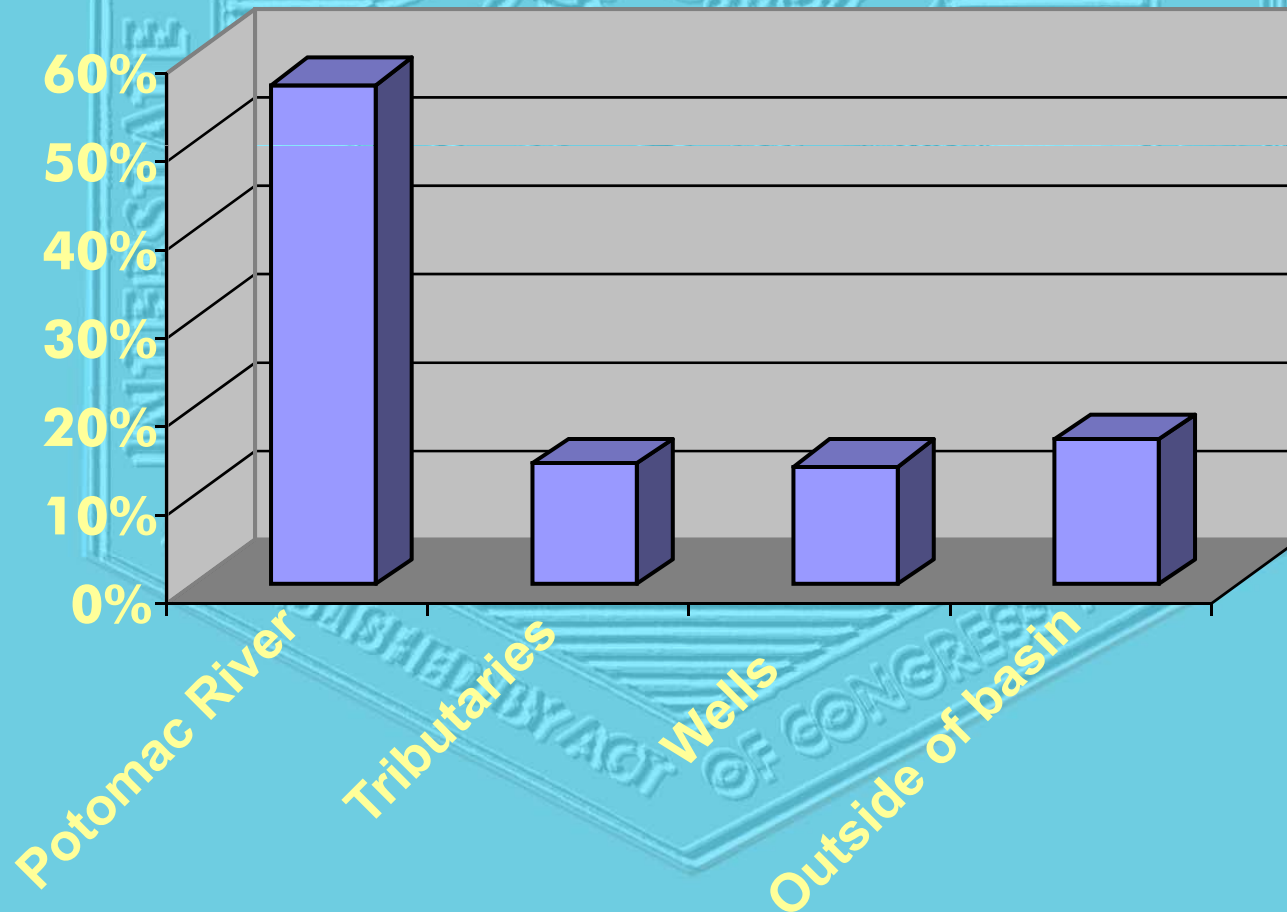
- Voluntary alliance
- Goal is protection of source water
- Works cooperatively on studies and projects
- Initiated in September, 2004

Source Water Protection Background

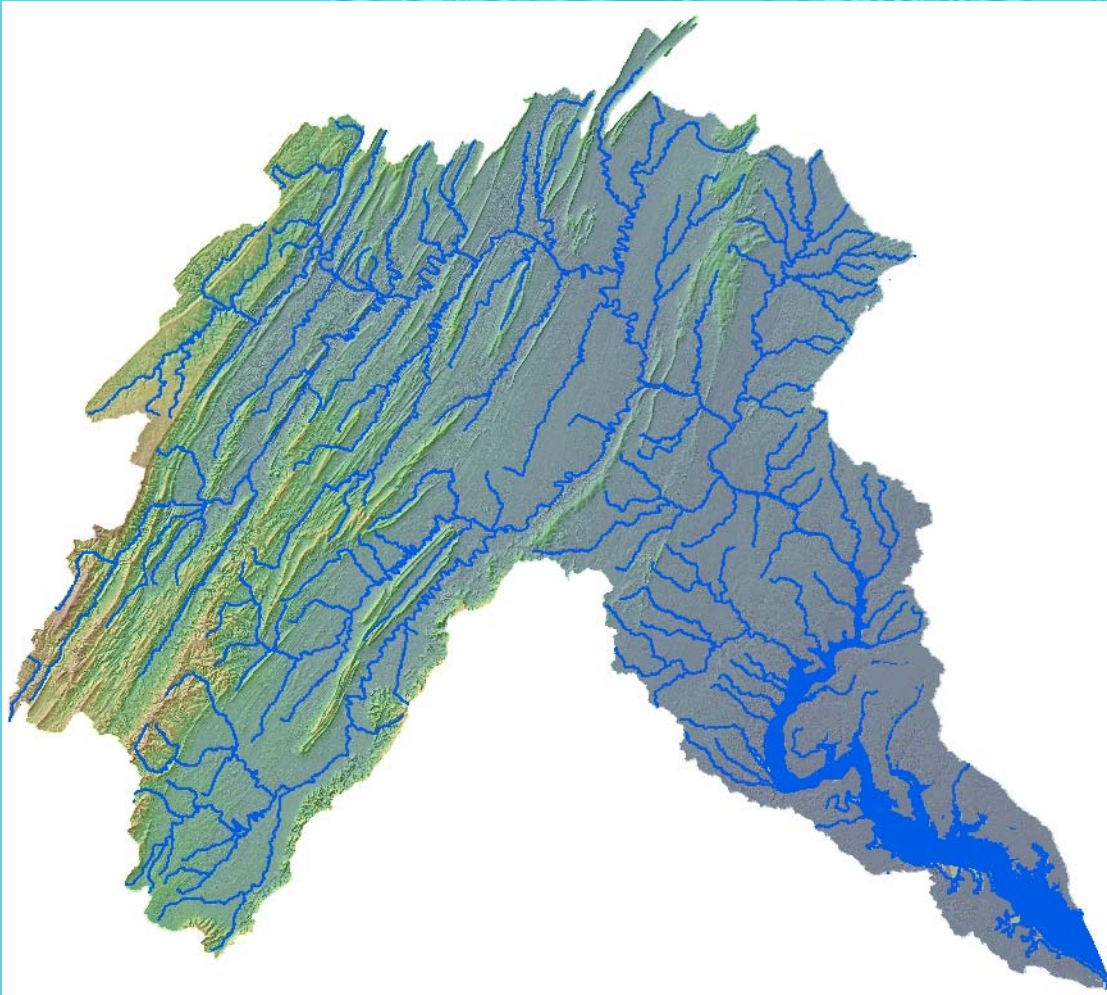


- Safe Drinking Water Act passed in 1974
- Original focus on water treatment and standards
- 1996 amendments required source water assessments for all public water supply systems

Sources of Drinking Water in the Potomac Basin

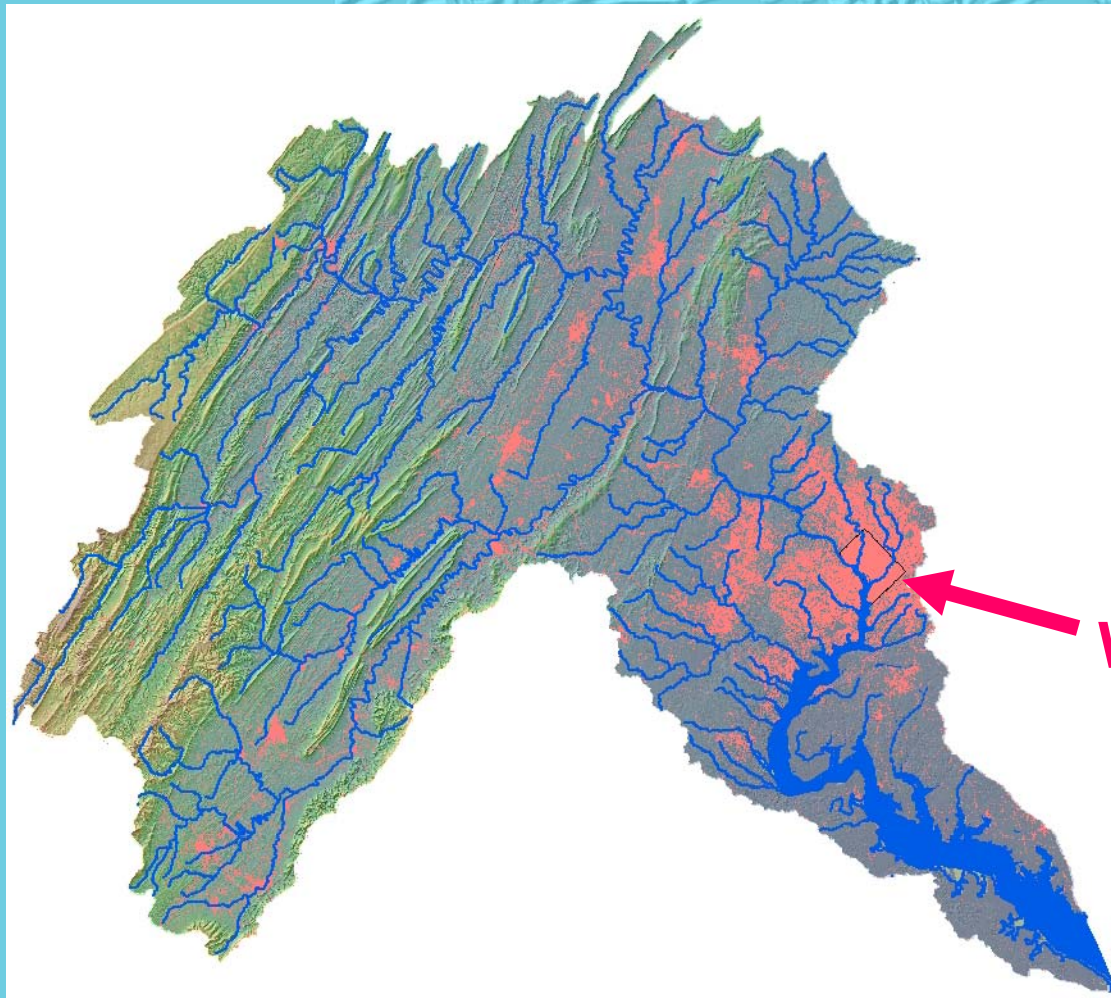


Potomac Source Water - Assets



- 57% forested
- 15% permanently protected
- Little heavy industry
- Chesapeake Bay Program initiatives

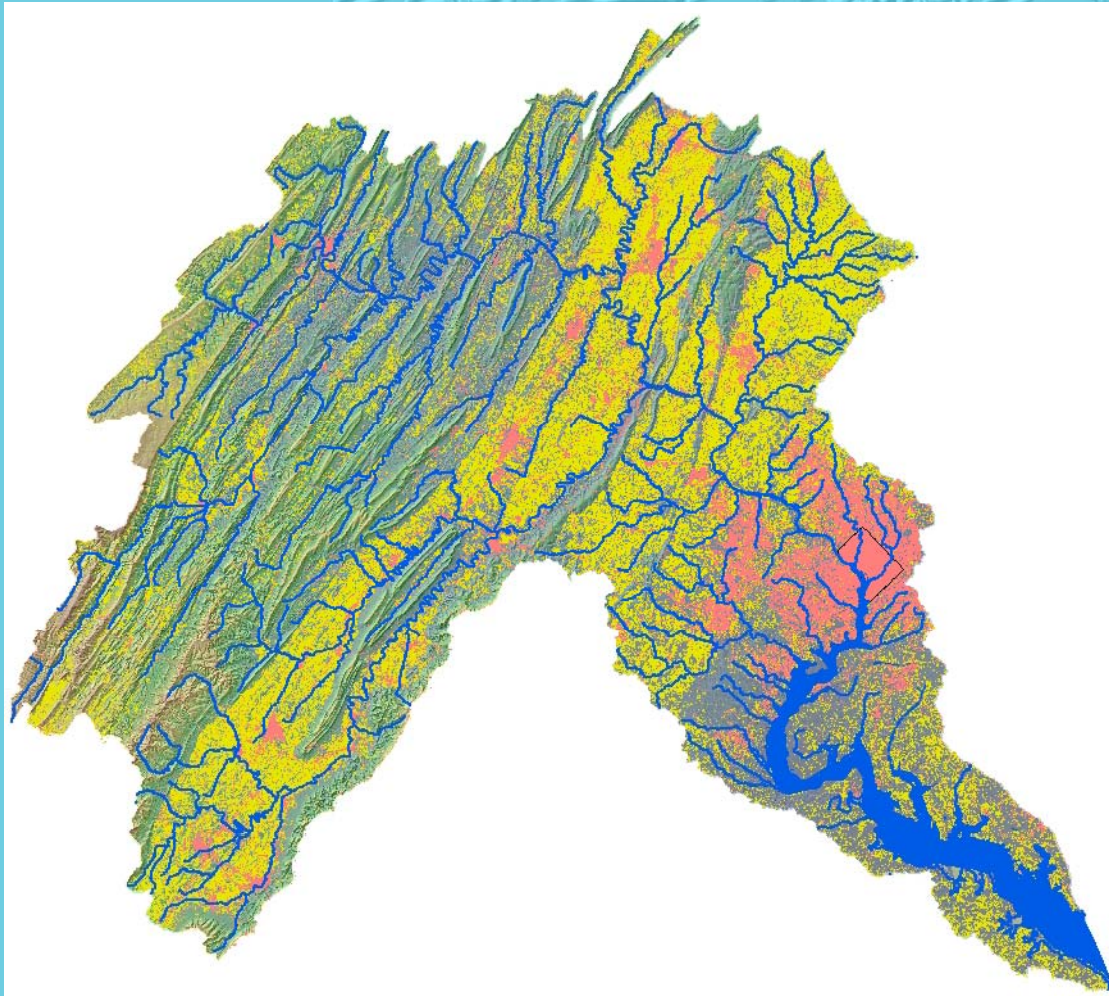
Potomac Source Water - Challenges



Rapid population growth

Washington, DC

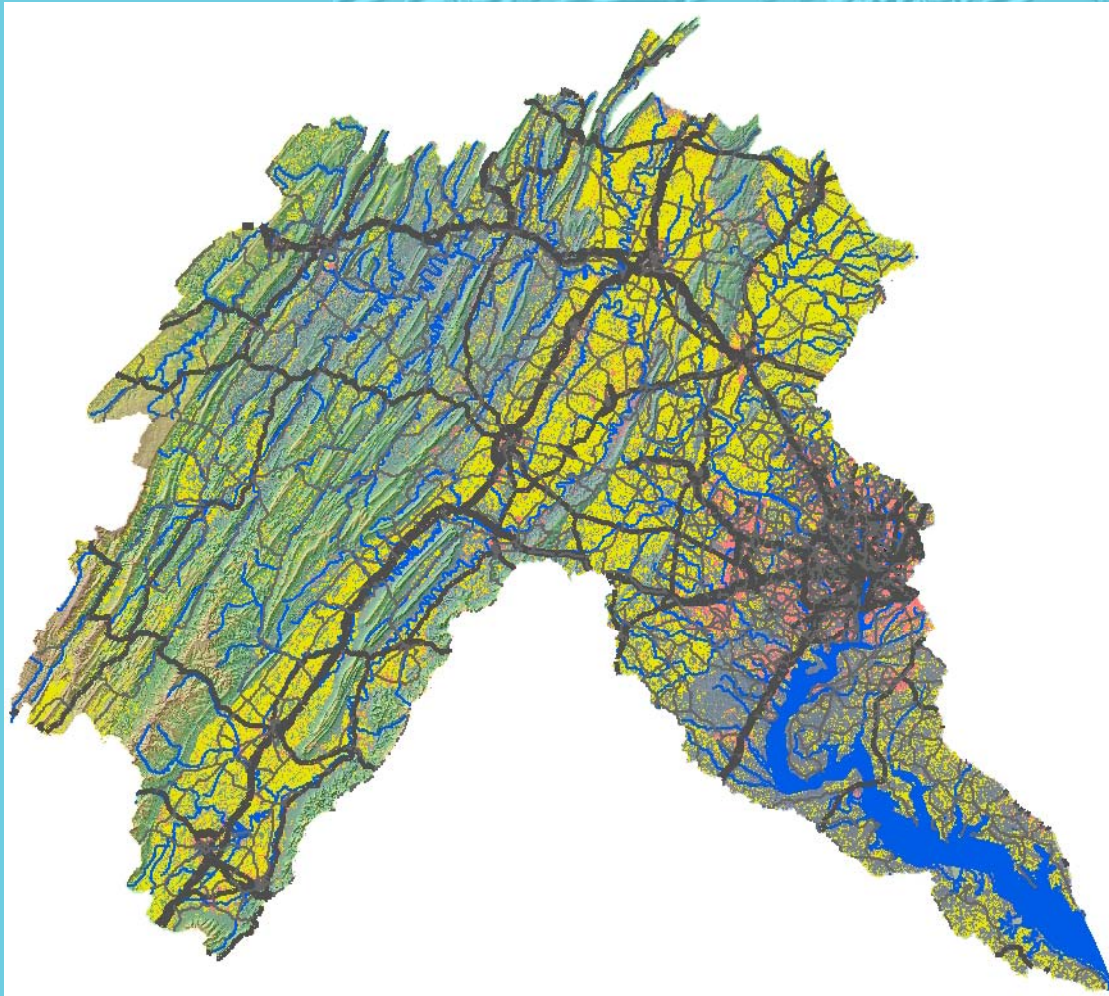
Potomac Source Water - Challenges



Agricultural
practices



Potomac Source Water - Challenges



Major
transportation
corridors

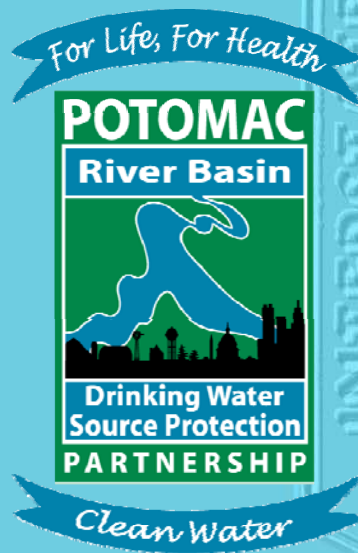


Some Causes for Concern



- Unexplained problems in fish
- Algae blooms
- Spills of hazardous materials

Genesis of Partnership



- Completion of Potomac source water assessments
- Encouragement by ICPRB and EPA
- History of successful cooperation between DC area water suppliers

Current Membership

- 7 state agencies
- **EPA**
- U.S. Geological Survey
- ICPRB
- 10 public water supply systems



Objectives

- Identify regional priorities
- Promote communication and information-sharing
- Encourage coordinated approaches
- Develop new initiatives to ensure the highest quality drinking water



Partnership Strategy



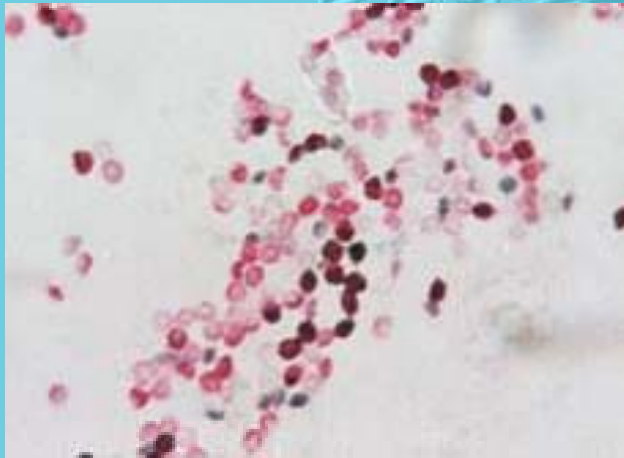
- Pathogens
- Emerging contaminants
- - Disinfection by-products
- Hazardous spills

- Meetings and workshops
- Scientific studies

- *Discussions begun*

Activities Related to Pathogens

- **Accomplishments:**



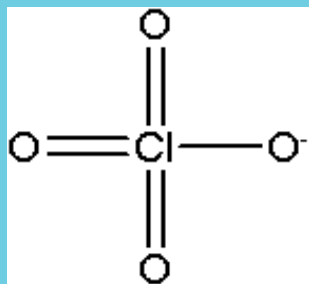
- Workshop on cryptosporidium
- Cryptosporidium source tracking study
- Workshop on practices of dairy and beef cattle industry

Activities Related to Pathogens



- Under discussion:
 - Support of agricultural “best management practices”?

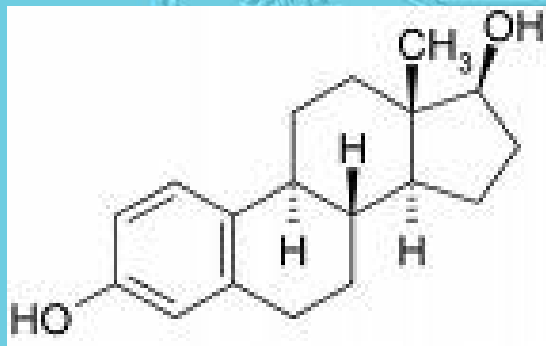
Activities Related to Emerging Contaminants



perchlorate



phthalates



estradiol

- **Accomplishments:**

- 3 workshops
- Participation in EPA monitoring perchlorate study

- **Under discussion:**

- Promotion of “state-of-the-art” sewage treatment technologies?
- Promotion of regulations similar to European Union’s REACH?

Activities Related to Releases of Hazardous Materials



- Accomplishments:
 - Spill response exercises
 - Pipeline safety review
- Under discussion:
 - Improved safety measures for local pipeline?



Conclusion

- Cooperative alliances cannot:
 - Reach consensus on all issues
 - Serve as a substitute for regulations
- Cooperative alliances can:
 - Build trust
 - Help disseminate information
 - Reduce duplication of efforts
 - Effectively exert pressure for change

CHALLENGES IN WHICH WRRRI PROGRAMS MAY HELP BASIN

Consumptive use

Water reuse (Social aspects)

Sediment and emerging contaminants

Disinfection by-products

Education of next generation of engineers and planners

CONTACT ICPRB

- Web: www.potomacriver.org
- Phone: 301 984-1908, X 126
- jhoffman@icprb.org

